



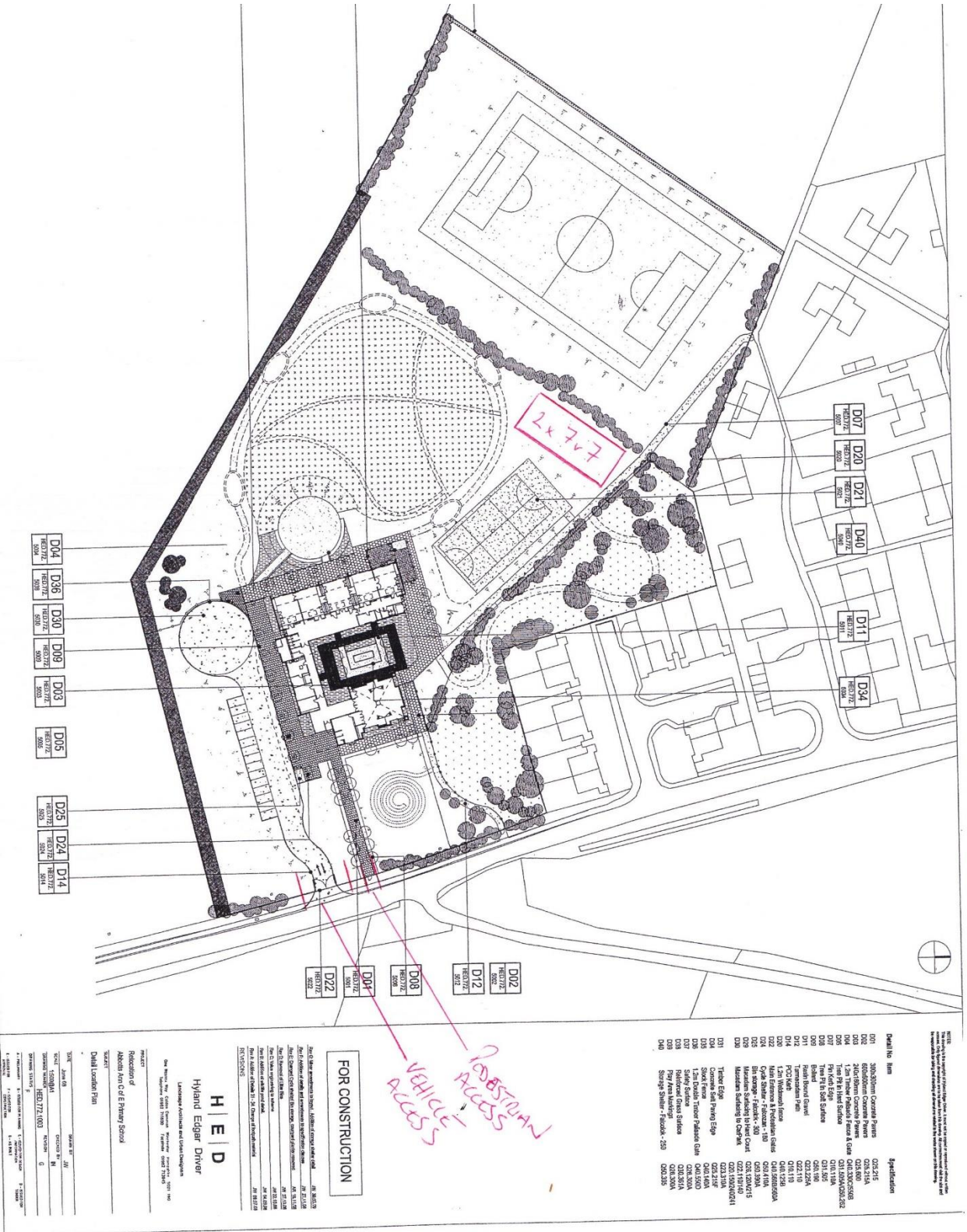
Andover New Street Youth FC

EMERGENCY ACTION PLAN – Site Specific

This document is intended to help deliver an effective medical response in the event of a player, club member, match official or spectator being injured or becoming ill whilst on site(s) or hired pitches.

Club Name	Andover New Street Youth Football Club
Pitch Venue	Abbotts Ann Church of England Primary School, Duck Street, Abbotts Ann, Andover, Hampshire, SP11 7FE
First Aider Information	
Andover New Street Youth FC managers and coaches hold a FA First Aid Certificate (as a minimum one will be on-site during the match). They will be able to assist with a medical emergency. Please locate the nearest Andover New Street Youth manager or coach should you require assistance. A match day respect steward in hi-vis will also be able to help you.	
Item	Location
First Aid Kit	Pitch side – held by the Team Manager/Coach/First Aider
Changing rooms	There are NOT changing rooms or toilets available at this venue.
Defibrillator	Rear of Eagle Inn Public House, Duck st, Abbotts Ann, SP11 7BG. Available 24/7 public access.
Access Routes	
For Ambulance – Vehicular access to the field/pitches is not possible. Ambulance to park in school car park and pedestrian access is via footpath to the right of the school building.	
Other Information	
Nearest Hospital / A&E	<p>Royal Hampshire County Hospital (And A&E open 24hrs) Romsey Road , Winchester, Hampshire, SO22 5DG. 01962 863535 Website: http://www.hampshirehospitals.nhs.uk (17.7 miles / 27 mins from training venue)</p> <p>Salisbury District Hospital (And A&E open 24hrs) Odstock Road , Salisbury, Wiltshire, SP2 8BJ 01722 336262 Website: http://www.salisbury.nhs.uk (22.5 miles / 34 mins from training venue)</p> <p>Basingstoke and North Hampshire Hospital (And A&E open 24hrs) Aldermaston Road , Basingstoke, Hampshire, RG24 9NA 01256 473202 Website: http://www.hampshirehospitals.nhs.uk (25.3 miles / 31 mins from training venue)</p>
Directions to Hospital / A&E	For Royal Hampshire County Hospital details please click HERE For Salisbury District Hospital details please click HERE For Basingstoke & North Hampshire Hospital details please click HERE

Venue Overview



Access Information

Main gate (car park) code is 8503

The pitches are at the rear of the school building, reached by a path on the right as you look at the school from the car park. We have a key (yellow fob)

If access through the large five-bar gate is required the code is 0000

Emergency contacts;

Admin/Business Manager – Jane Wiggs – 07887 745220

Head teacher – Claire Vignaux – 07958 431248

Main School number is 01264 710244